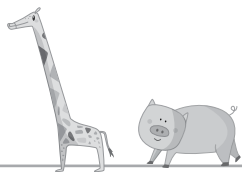


REPASEN LAS LETRAS Y  
COMPLETEN LOS RENGLONES.



Handwriting practice for the cursive letter 'j'. A guide shows stroke order: 1 (downward curve), 2 (upward curve), 3 (downward curve). The practice row contains two dashed 'j's for tracing and three blank lines for independent writing.

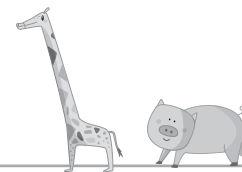
Handwriting practice for the cursive letter 'm'. A guide shows stroke order: 1 (downward curve), 2 (upward curve), 3 (downward curve). The practice row contains two dashed 'm's for tracing and three blank lines for independent writing.

Handwriting practice for the cursive letter 'g'. A guide shows stroke order: 1 (downward curve), 2 (upward curve), 3 (downward curve). The practice row contains two dashed 'g's for tracing and three blank lines for independent writing.

Handwriting practice for the cursive letter 'l'. A guide shows stroke order: 1 (downward curve), 2 (upward curve), 3 (downward curve), 4 (downward curve). The practice row contains two dashed 'l's for tracing and three blank lines for independent writing.

Handwriting practice for the cursive letter 'ch'. A guide shows stroke order: 1 (downward curve), 2 (upward curve), 3 (downward curve), 4 (downward curve). The practice row contains two dashed 'ch's for tracing and three blank lines for independent writing.

REPASEN LAS LETRAS Y  
COMPLETEN LOS RENGLONES.



Handwriting practice for the cursive letter 'j'. A guide shows stroke order: 1 (downward curve), 2 (upward curve), 3 (downward curve). The practice row contains two dashed 'j's for tracing and three blank lines for independent writing.

Handwriting practice for the cursive letter 'm'. A guide shows stroke order: 1 (downward curve), 2 (upward curve), 3 (downward curve). The practice row contains two dashed 'm's for tracing and three blank lines for independent writing.

Handwriting practice for the cursive letter 'g'. A guide shows stroke order: 1 (downward curve), 2 (upward curve), 3 (downward curve). The practice row contains two dashed 'g's for tracing and three blank lines for independent writing.

Handwriting practice for the cursive letter 'l'. A guide shows stroke order: 1 (downward curve), 2 (upward curve), 3 (downward curve), 4 (downward curve). The practice row contains two dashed 'l's for tracing and three blank lines for independent writing.

Handwriting practice for the cursive letter 'ch'. A guide shows stroke order: 1 (downward curve), 2 (upward curve), 3 (downward curve), 4 (downward curve). The practice row contains two dashed 'ch's for tracing and three blank lines for independent writing.